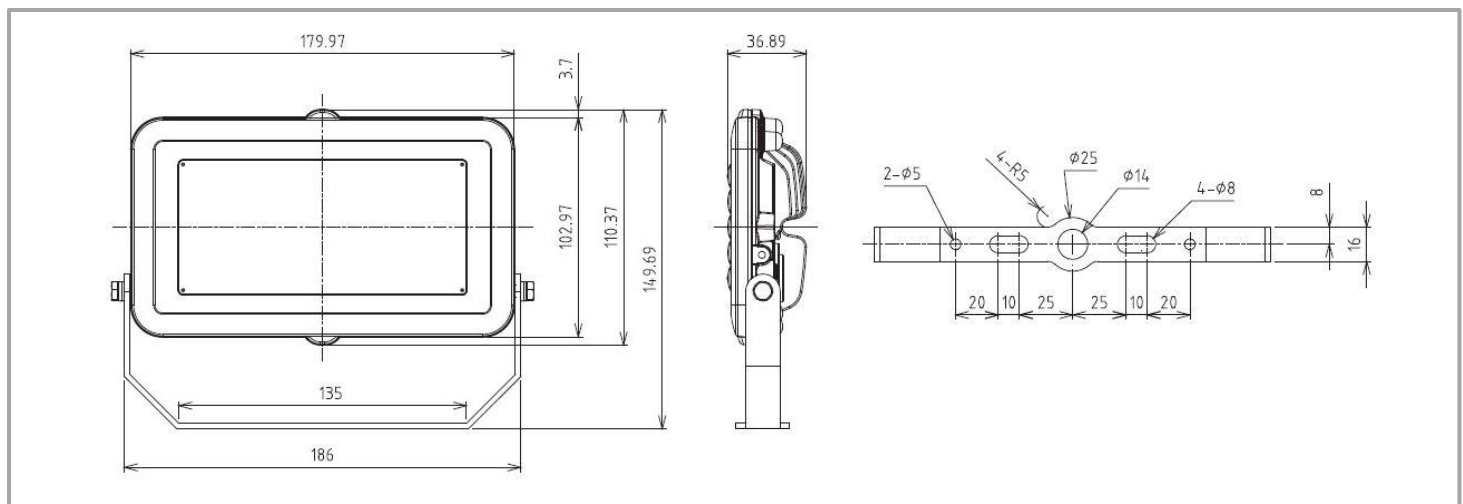


LED FLOOD LIGHT (HSL-F02 30W)



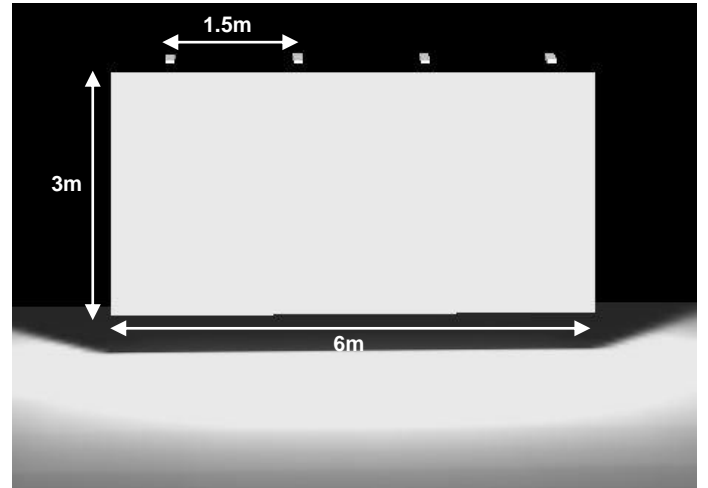
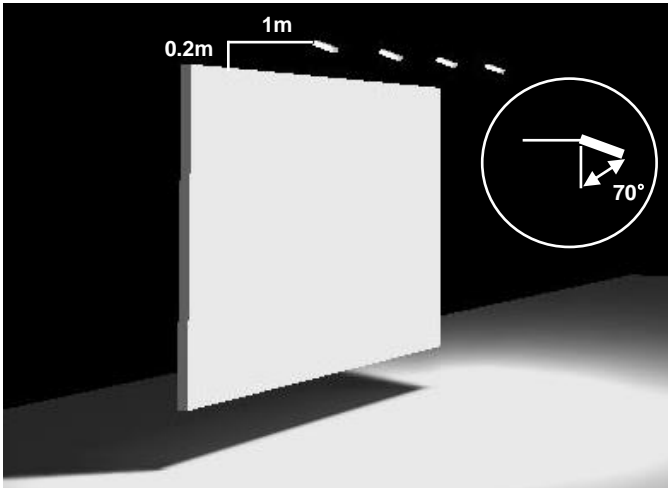
50° x 80° Excellent Uniformity	230VAC (220~240VAC) input	0.8kg Lower weight	CE/RoHS	3Years Warranty	IP66
--	-------------------------------------	------------------------------	----------------	---------------------------	-------------



Model (Model No.)	Input Vol.	Power Con.	CCT	Beam angle	CRI	Lum. Flux	Lum. Efficacy	Packaging
HSL-F02 30W 6500K	230VAC	30W	6500K	50x80°	Ra80	2700 lm	90 lm/W	10pcs in one box

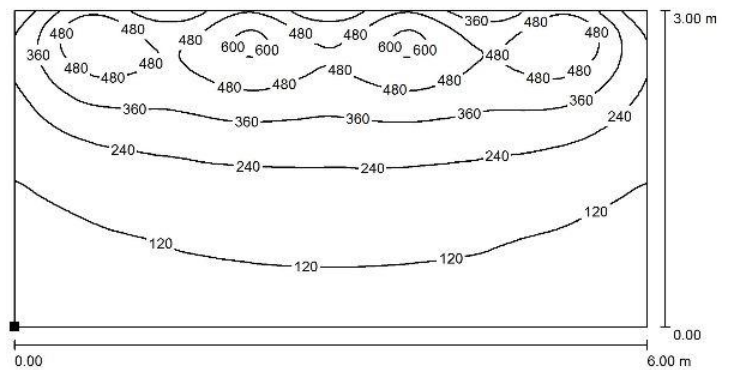
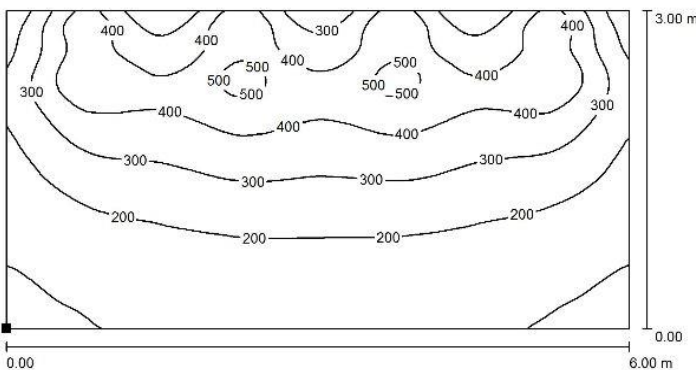
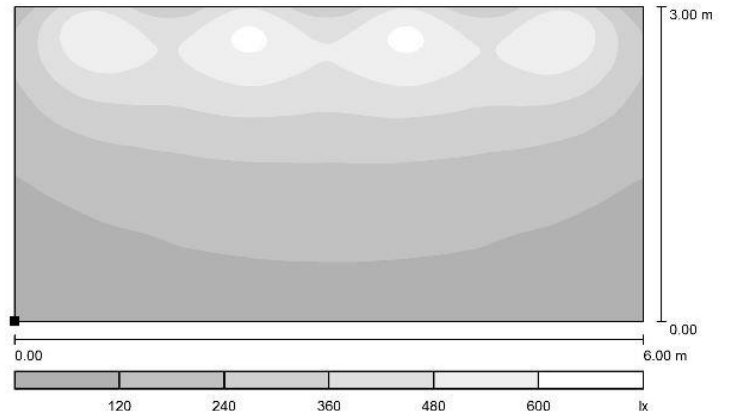
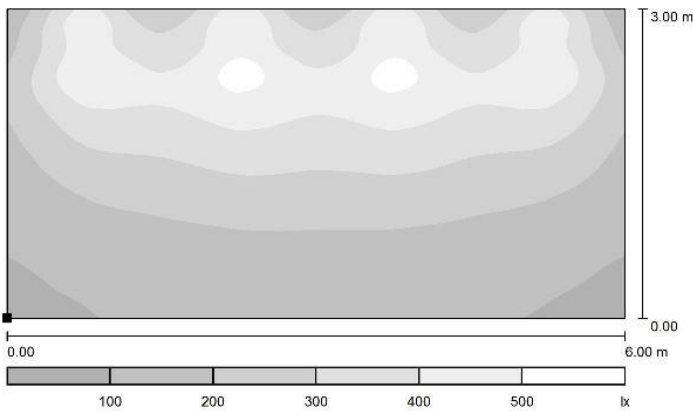
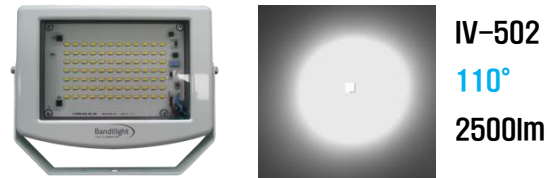
Operating Temp. : -20°C ~ +40°C

Simulation Report



◆ Simulation Condition

- Board size : 3m (H) x 6m(W)
- Flood Light No. : 4pcs (1.5m distance between Flood Lights)



Model	Beam Angle	E min	E max	E avg	Uo (E min / E avg)
HSL-F02 30W	50 x 80°	73 lx	532 lx	272 lx	0.267
IV-502 30W	110°	58 lx	627 lx	255 lx	0.226